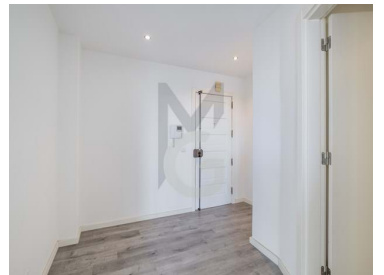
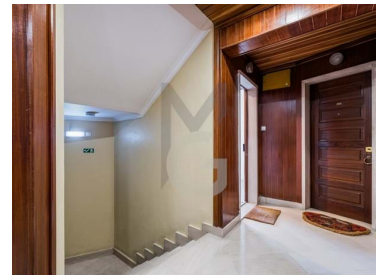




Penha de França - Apartment



3 Bedrooms
2 Bathrooms
100 Area (m²)
Garage



750 000 €
(EUR €)

3-beds apartment with fantastic river and city views, in Penha de França, Lisbon

3-beds apartment, with a fantastic view of the river and the city, with the dome of the National Pantheon hugging the house. One of the best views of Lisbon waiting for you.

Located between the neighborhoods of Santa Apolónia, Penha de França and Alto de São João, in a very quiet area, but with shops nearby.

Apartment completely refurbished in 2016, distributed by entrance, living room with view, equipped kitchen, one bedroom en suite with balcony and two bedrooms, a full bathroom.

There is also a parking space and a storage room.

T +351 912373588 ² · E geral@miriamguerreiro.com
AMI 17356

¹ (Call to national fixed network) | ² (Call to national mobile network)



Property Features

- Washing machine
- Fitted wardrobes
- Air conditioning pre installation
- Terrace
- Built year: 1990
- Storage / utility room
- Lift
- Quiet Location
- Energetic certification: In process
- Balcony
- Dishwashing machine
- Equipped kitchen
- Proximity: Shopping, Restaurants, City, Public Transport
- Garage
- Drive way
- Views: River view, City view
- Double glazing
- Uninterrupted views
- Solar orientation: North, West
- Renovation year: 2016

T +351 912373588 ² · E geral@miriamguerreiro.com
AMI 17356

¹ (Call to national fixed network) | ² (Call to national mobile network)